

Partner and Affiliate School Bulletin: Autumn 2024

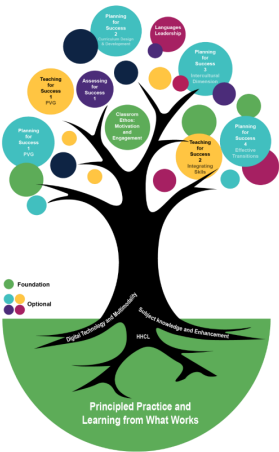
Language Hubs on film!



On Thursday 27th November, Etherow Language Hub welcomed a film crew commissioned by NCLE to spend the day in the language department capturing footage of language teachers and pupils. The crew filmed two full lessons along with interviews of pupils and their teachers. All of the NCLE Language Hubs will be visited in the



coming weeks. Once edited, the footage will be used to support professional development for Language teachers through NCLE’s online learning platform on their website: [Language Hubs - NCLE](https://www.languagehubs.org.uk/)

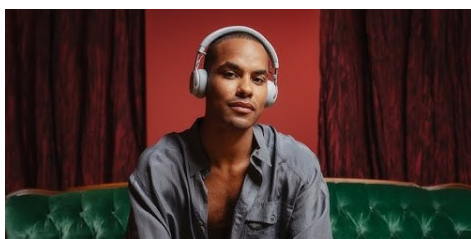


North West Language Hubs host online CPD event

On November 13th, the 3 Language Hubs in the North West: Etherow, Kinder (Oldham) and The Lakes, joined forces to deliver an online CPD session to partner schools and affiliates. We discussed approaches to motivation in Language learning along with the new GCSE for first examining in 2026. If you missed the event and would like a copy of the material used, please get in touch with us.

The next North West Language Hub online CPD event will be on Thursday 6th March 2025. We will send out more information to partner and affiliate schools in advance of the event along with a link to join.

Etherow Language Hub hosts Lie Ning, German musician and artist



Shortly before the October half term, Etherow Language Hub teamed up with the Goethe Institut to host a special guest, German artist and musician Lie Ning. Lie was on a “slow tour” of Europe, using only sustainable forms of transport and spending time in each location to engage with local communities. Lie came into Cheadle Hulme High

School for a question and answer

session (in German and English) and was able to tell students about his experiences and motivations.

Click on the link below to see the Goethe Institut’s planned events for teachers and learners of German.



Etherow Language Hub hosts German teacher



Etherow Language Hub, based at Cheadle Hulme High School hosted a German Teacher for two weeks in November.

Johannes Schmidt, a teacher from Gymnasium Siegburg Alleestr. near to Bonn, spent two weeks in school getting to know teachers, pupils and gaining a better understanding of the English school system. Johannes was able to give presentations to German classes about his schools

and the German school system. Both schools are now planning for future collaboration and opportunities to link our students. [UK German Connection – Bringing young people together](#)



Did you know that students can learn German as their skill for DofE?

The Goethe Institut and the Gimagine programme have partnered with DofE to provide a structured way to learn German and for it to count towards the skill element of a young person's DofE programme. Full details can be found on the Gimagine website:



[GIMAGINE - Teaching and Learning German](#)



Join us at Language World in Kenilworth, from 14th -15th March 2025. Language World is ALL's annual flagship conference, and a highlight of the year for teachers of all languages. This year's event is packed with speakers from across the languages sector and offers a two-day shot of ideas, advice, debate and inspiration.

Find out more and register here: [Language World 2025 - Association for Language Learning](#)

Breaking News... Etherow Language Hub to host Y9 options promotion event—February 2025

Etherow Language Hub is excited to announce a line-up with British Council and GCHQ's to hold a Language promotional event in February 2025. This will be aimed at Y9 students approaching their GCSE option choices and will include motivational speakers and activities designed to motivate. We are hoping to invite a range of partner schools.



More details will follow soon, but if you would be interested in bringing some of your students to this event, please get in touch.



NCLE Universal CPD events in 2025

15th January 2025 4.00pm - 5.00pm	Bringing the New GCSE to Life (Part 2) Webinar Registration - Zoom
12th February 2025 4.00pm - 5.00pm	Transition & Transfer at KS2 (Part 1) Webinar Registration - Zoom
26th March 2025 4.00pm - 5.00pm	Transition & Transfer at KS2 (Part 2) Webinar Registration - Zoom



Looking back on 2024

The 2023-24 Academic Year was an exciting time as Etherow Language Hub launched.

Here are some of the highlights of 2024!



Back in March, the British Council's film crew visited Etherow Language Hub to make a promotional video about the benefits of Language Assistants

Our French and Spanish Language Assistants were the stars of the show, along with some of our students, including some A-level students who have now gone on to study Languages at University. Click on the link below to watch the finished video!



If you are considering applying for Language Assistants at your school, you will also find out more information on the British Council website also on the link below. Please get in touch with us if you would like any advice about using MLAs in your school.

[Employ a language assistant at your school, college or university | British Council](#)

In May of this year, the Etherow Language Hub brought partner schools together at Cheadle Hulme High School, as they hosted an event to celebrate Home, Heritage and Community Languages through poetry. It was attended by around 100 students and pupils from ages 9-17, from 8 different schools across the Etherow Language Hub network, Laurus Trust and local primary schools.

Students and pupils collaborated to write poetry and prepare entries for the Mother Tongue Other Tongue poetry competition, which is a multi-lingual poetry project celebrating cultural diversity and the many languages spoken in schools in the UK – run in the Northwest by Manchester Metropolitan University. Over 25 languages were represented by students, many of whom are multi-lingual. Click on the link below if you would like more information about the MTOT competition.



[Mother Tongue Other Tongue North West England Competition | Manchester Metropolitan University](#)



Etherow Language Hub partner network launches!

In March of this year, the Etherow Language Hub partner network officially launched! The network includes Seven schools from the North West, representing several different local authorities. The Heads of Department from each school came together to discuss and agree shared priorities, such as preparing for the new GCSE and improving provision for home, heritage and community languages.